

SPCM/SPCH series – self-priming centrifugal pumps

Some of the fastest priming pumps on the market. Available in high head or medium head series. Feature leak-proof mechanical seals, easy service design, heavy-duty motors, rugged construction. Available in 3 and 5 HP.

Optional 6" and 8" Trap Packages are available.

application

- Lawn Sprinkling... operates up to 30 sprinkler heads. Can be safely operated by timer or other automatic device.
- Contractors... for dewatering excavation, water transfer and supply operations.
- Agriculture... seed bed and plot irrigation, stock watering.
- Industrial... sump drainage, marine pumping, liquid transfer and supply operations.

specifications

Body and Base – Close-grained cast iron

Impeller – Bronze

Diffuser – Cast iron

Shaft – Carbon steel inside removable shaft sleeve of stainless steel.

▶ **Rugged Construction** – Heavy-duty motors, easy service design

▶ **High Head Models** – Deliver up to 145' of head with capacities to 95 GPM

▶ **Drain Port** – Provided for easy winterizing

▶ **Easy Serviceability** – Normal wearing parts are easily accessible for service and replacement, without disturbing piping or mounting

▶ **Heavy-Duty Motors** – Designed for continuous operation. Capacitor start, reduces electrical interference. A.O. Smith motors have ball bearing with stainless steel shaft. Single and three-phase available.



Suction flange with flapper check included.

SPCM/SPCH series – self-priming centrifugal pumps

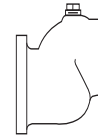
ordering information

Catalog Number	HP	Pipe Tapping Sizes		Motor Voltage	Phase	Max. Load Amps	Approx. Wt. Lbs.
		Suction Flange	Discharge				
SPCH HIGH HEAD							
SPCH-300	3	2"	1-1/2"	230	1	13.4	144
SPCH-3-300	3	2"	1-1/2"	208-230/460	3	8.6/4.3	144
SPCH-500	5	2-1/2"	2"	230	1	22	184
SPCH-3-500	5	2-1/2"	2"	208-230/460	3	13.2/6.6	184
SPCM MEDIUM HEAD							
SPCM-300	3	2-1/2"	2"	230	1	13.4	137
SPCM-3-300	3	2-1/2"	2"	208-230/460	3	8.6/4.3	137
SPCM-500	5	3"	2-1/2"	230	1	22	184
SPCM-3-500	5	3"	2-1/2"	230/460	3	13.2/6.6	184

NOTE: Consult factory for 575V.

SPCM/SPCH SERIES – FLANGE ADAPTERS (INCLUDED WITH PUMP)

Package 52 –	Package 53 –	Package 72 –	Package 73 –
1-1/2"	2"	2-1/2"	3"



PKG 52
1-1/2"



PKG 53
2" NPT

PKG 72
2-1/2"

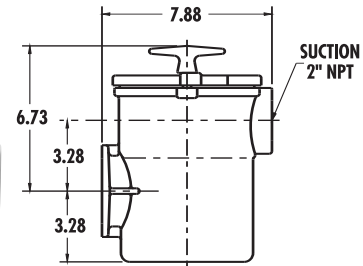
PKG 73
3" NPT

SPCM/SPCH SERIES – SUCTION TRAPS

Catalog Number	Description	Suction Port Size	Approx. Wt. Lbs.
PKG 51	6" Cast Iron Trap with Basket	2" NPT	20
PKG 76	Cast Iron Flange for Remote Installation	3" NPT	4
PKG 98	8" Cast Iron Trap with Basket	3" NPT	40



PKG 51
6"



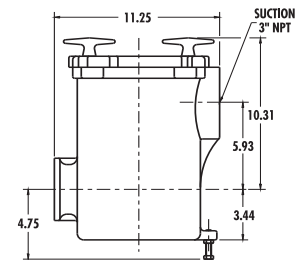
PKG 51
6 INCH TRAP



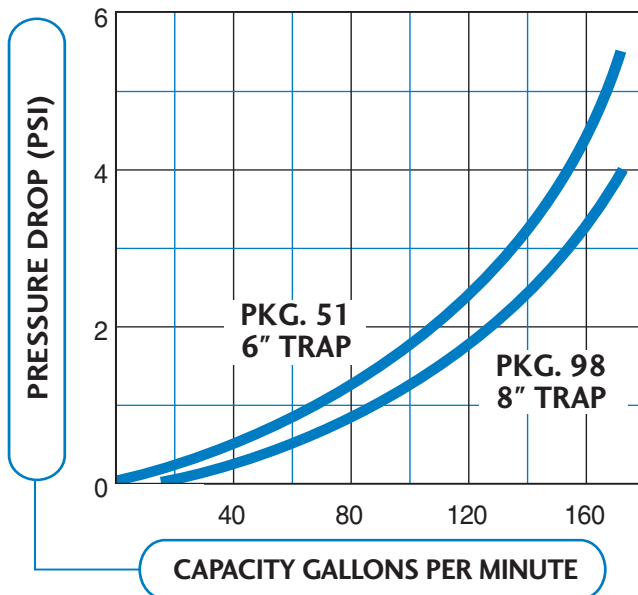
PKG 76



PKG 98
8"

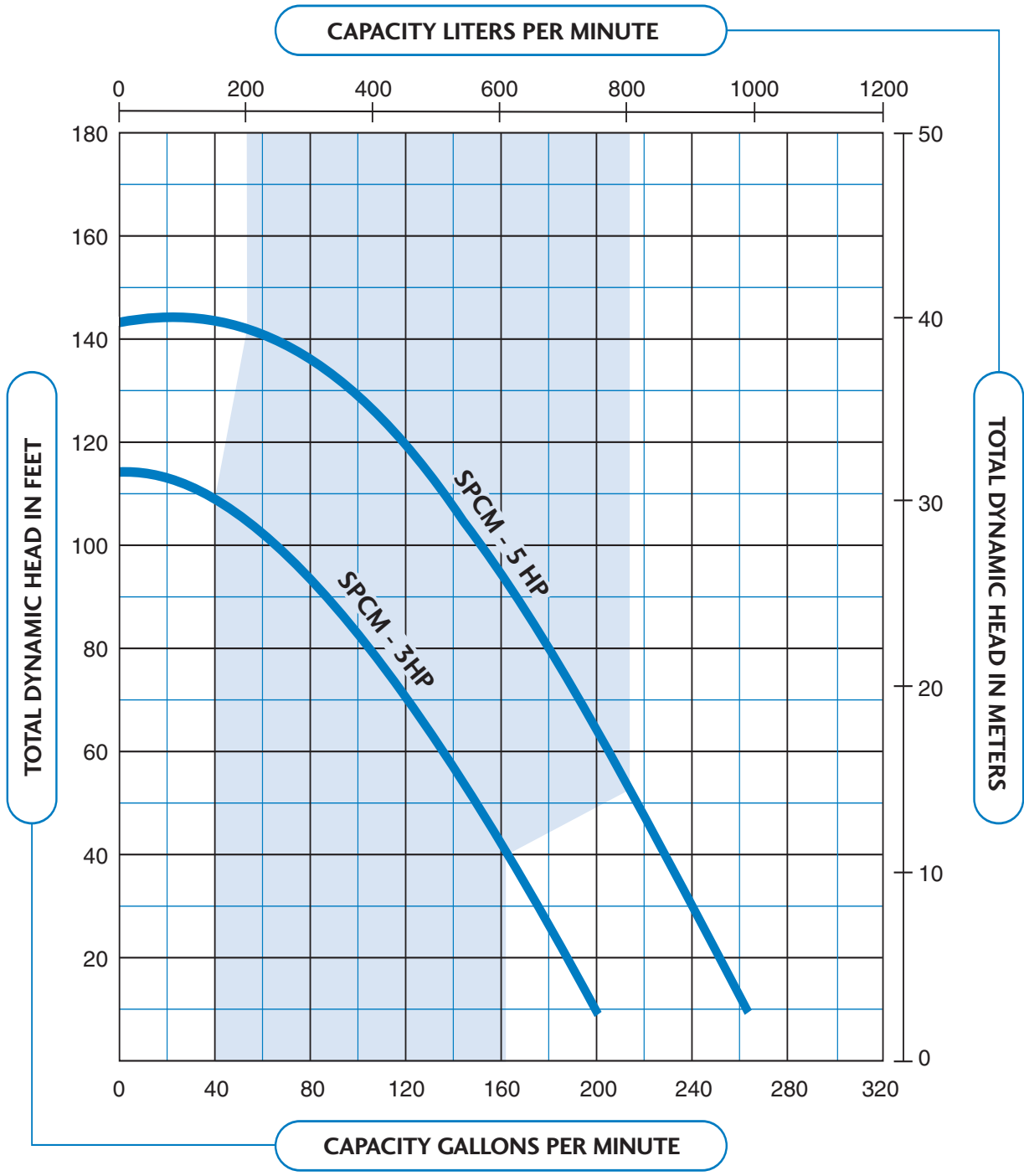


PKG 98
8 INCH TRAP



SPCM/SPCH series – self-priming centrifugal pumps

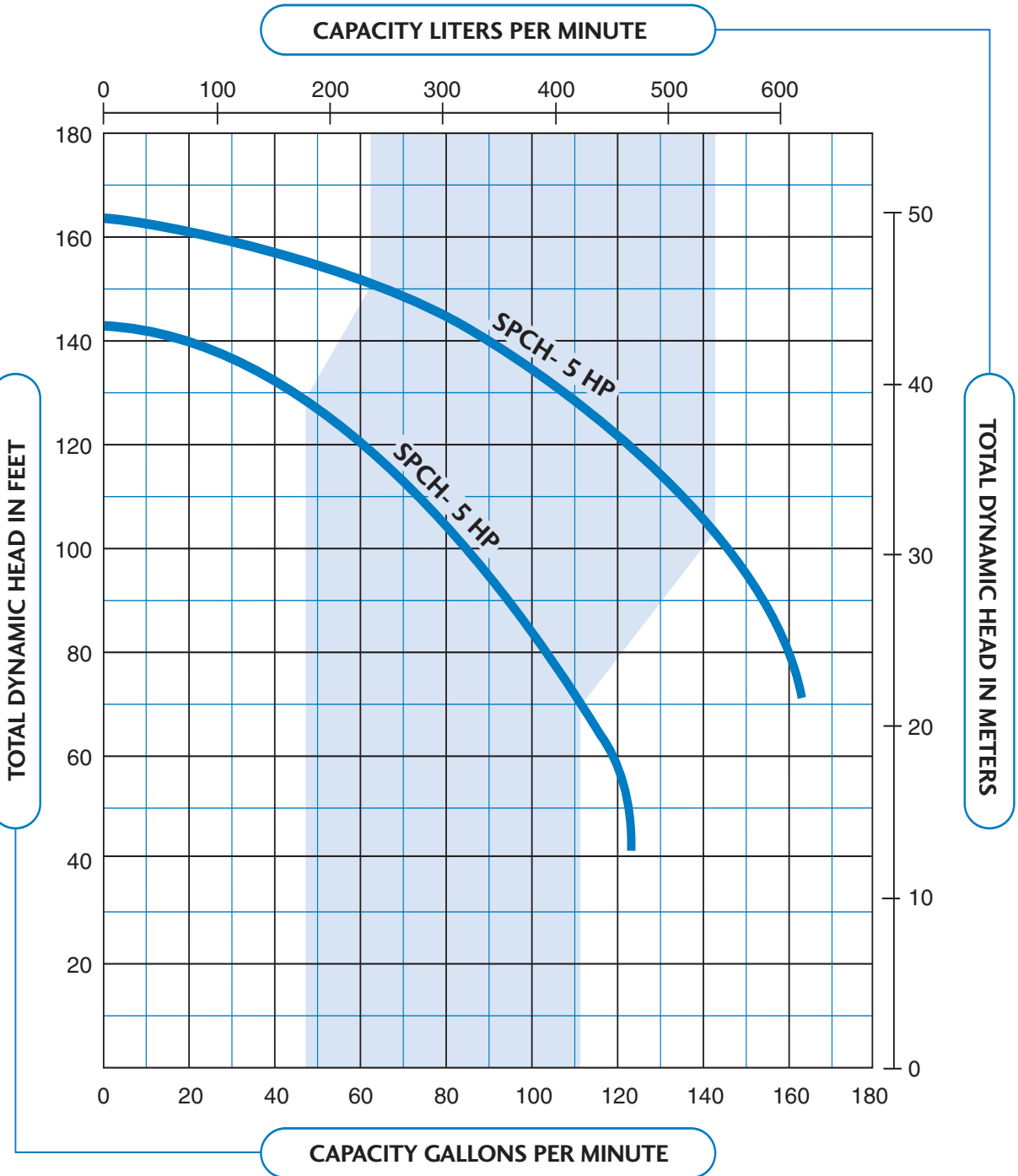
SPCM pump performance



SHADED AREAS INDICATE MOST ECONOMICAL RANGE

SPCM/SPCH series – self-priming centrifugal pumps

SPCH pump performance



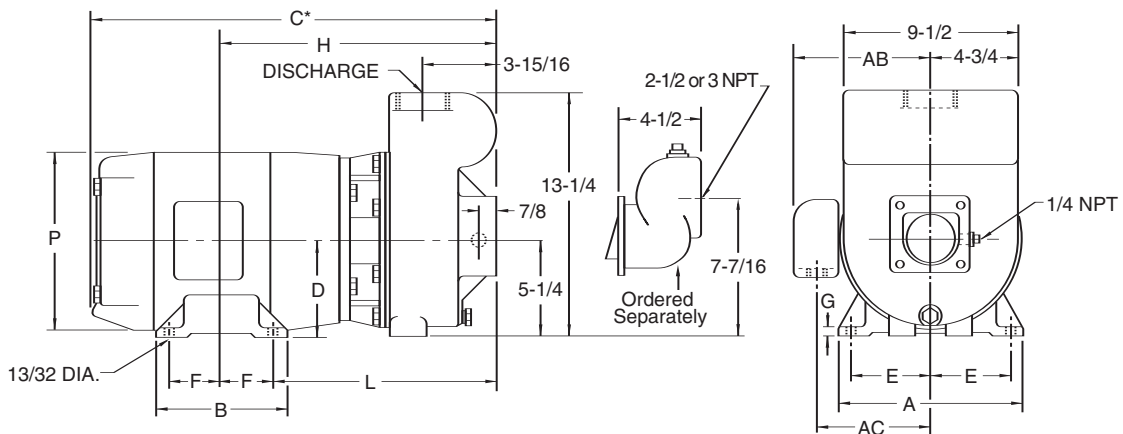
SHADED AREAS INDICATE MOST ECONOMICAL RANGE

SPCM/SPCH series – self-priming centrifugal pumps

pump performance

Catalog Number	HP	Discharge		Suction Lift in Feet				
		PSI	Feet Head	5'	10'	15'	20'	25'
SPCH HIGH HEAD								
SPCH-300/ SPCH-3-300	3	20	46.2	121	119	105	96	68
		30	69.3	106	103	98	92	66
		40	92.4	85	80	74	69	60
		50	115.5	58	51	42	32	13
SPCH-500/ SPCH-3-500	5	20	46.2	162	161	152	138	98
		30	69.3	160	158	150	136	98
		40	92.4	146	141	136	130	96
		50	115.5	119	114	105	95	85
		60	138.6	81	70	55	30	–
SPCM MEDIUM HEAD								
SPCM-300/ SPCM-3-300	3	20	46.2	159	154	146	138	99
		30	69.3	126	118	110	101	86
		40	92.4	85	75	51	26	–
SPCM-500/ SPCM-3-500	5	20	46.2	214	209	202	194	162
		30	69.3	185	179	172	165	158
		40	92.4	153	146	139	130	120
		50	115.5	114	101	85	65	28

outline dimensions



Dimensions (in inches) are for estimating purposes only.

dimensional data

Catalog Number	HP	A	B	C*	D	E	F	G	H	L	P	AB	AC
SPCM	3	9	6	20-3/4	4-1/2	3-3/4	2-1/4	1/2	15	12-3/4	9-3/4	8-1/8	6-1/2
	5	9	7	21-3/4	4-1/2	3-3/4	2-3/4	1/2	15-1/2	12-3/4	9-3/4	9	7
SPCH	3	9	6	20-3/4	4-1/2	3-3/4	2-1/4	1/2	15	12-3/4	9-3/4	8-1/8	6-1/2
	5	9	7	21-3/4	4-1/2	3-3/4	2-3/4	1/2	15-1/2	12-3/4	9-3/4	9	7

*Overall length (C) is shown for single-phase motors. Three-phase motors are slightly smaller.